



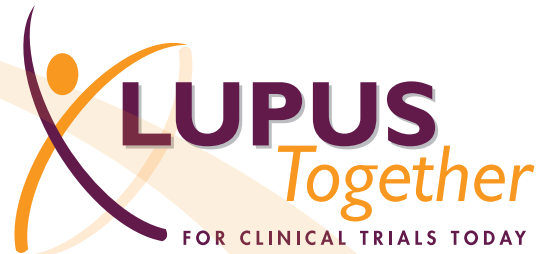
Over 20,000 visitors have logged on to the official clinical trials campaign website, LupusTrials.org, since its launch in 2007.

The Lupus Research Institute and its National Coalition of state and local lupus organizations developed the patient-friendly site as part of an initiative to educate the more than 1.5 million Americans with lupus about the importance of participating in lupus clinical trials.

The timing is critical, as promising new research findings spur drug developers to initiate clinical research in lupus for the first time in decades. Visitors to the site learn about the clinical trial process, how to sign up, and can read first-hand accounts of others who participate in trials.

“Our hope is that the next 10 years will be the Golden Age for the development of new lupus drugs. Science is ready. But for success, the lupus community must band together. We have the experts to conduct the trials. We have the Institute and others to get the word out. But to get results, we need lupus patients to show interest. This is for them. They need to do their part.”

– Richard Furie, MD, North Shore-Long Island Jewish Health System



Click. Shop. Support.

Find your favorite retailers at ShopForLupus.org

The Lupus Research Institute and its National Coalition have launched the only place to shop online and simultaneously help to find new treatments and a cure for lupus.

Start at ShopforLupus.org for all your online shopping. Many of your favorite retailers are there. Just click through to their sites and a percentage (5 – 20%) of each purchase goes to the Lupus Research Institute.

To ensure credit to lupus research, you must click through ShopForLupus.org. There is no additional cost to you or to the Lupus Research Institute.



Lupus Research Institute
330 Seventh Avenue
Suite 1701
New York, NY 10001

T: 212.812.9881 F: 212.545.1843
E-mail: lupus@lupusny.org
www.LupusResearchInstitute.org

Non-Profit Org.
US Postage
PAID
Permit No. 150
Orange, NJ

United to Prevent, Treat, and Cure Lupus

The Powerful Voice for Lupus Research— the National Coalition of the Lupus Research Institute

Founded and funded by patients and families, the **Lupus Research Institute** is pioneering new paths to discoveries in lupus. The nationwide network of **National Coalition** groups, concentrated in the nation's urban cores, is the Institute's voice on Capitol Hill and its champion in advocating for research breakthroughs.

• Mobilizing Lupus Research



The National Coalition drove the call for a multidisciplinary research plan for lupus at the National Institutes of Health. Published in summer 2007, *The Future Directions of Lupus Research* now guides the nation's investment in lupus research.

Coalition advocates thank House Appropriations Committee Chairman Bill Young (R-FL) for his leadership in securing a lupus research plan. With Rep. Young, L to R: Sandi Frear of Florida and Sheila Watts and Kathleen Arntsen of the Lupus Foundation of Mid and Northern New York.

• Championing Clinical Trials

The National Coalition educates doctors and people with lupus about the surge in potential treatments now in clinical trials—and the need for all to step up, enroll, and do their part. The Coalition's most powerful tool: LupusTrials.org, which is educating communities nationwide about trials and their potential.



LRI President Margaret G. Dowd (L) and LRI National Coalition members at the recent Clinical Trials Training Day in D.C.

• Eliminating Racial Disparities



With deep roots in urban America, the National Coalition deals daily with the predominance and severity of such lupus complications as kidney and cardiac disease in blacks, Hispanics, Asians, and people from other racial and ethnic backgrounds.

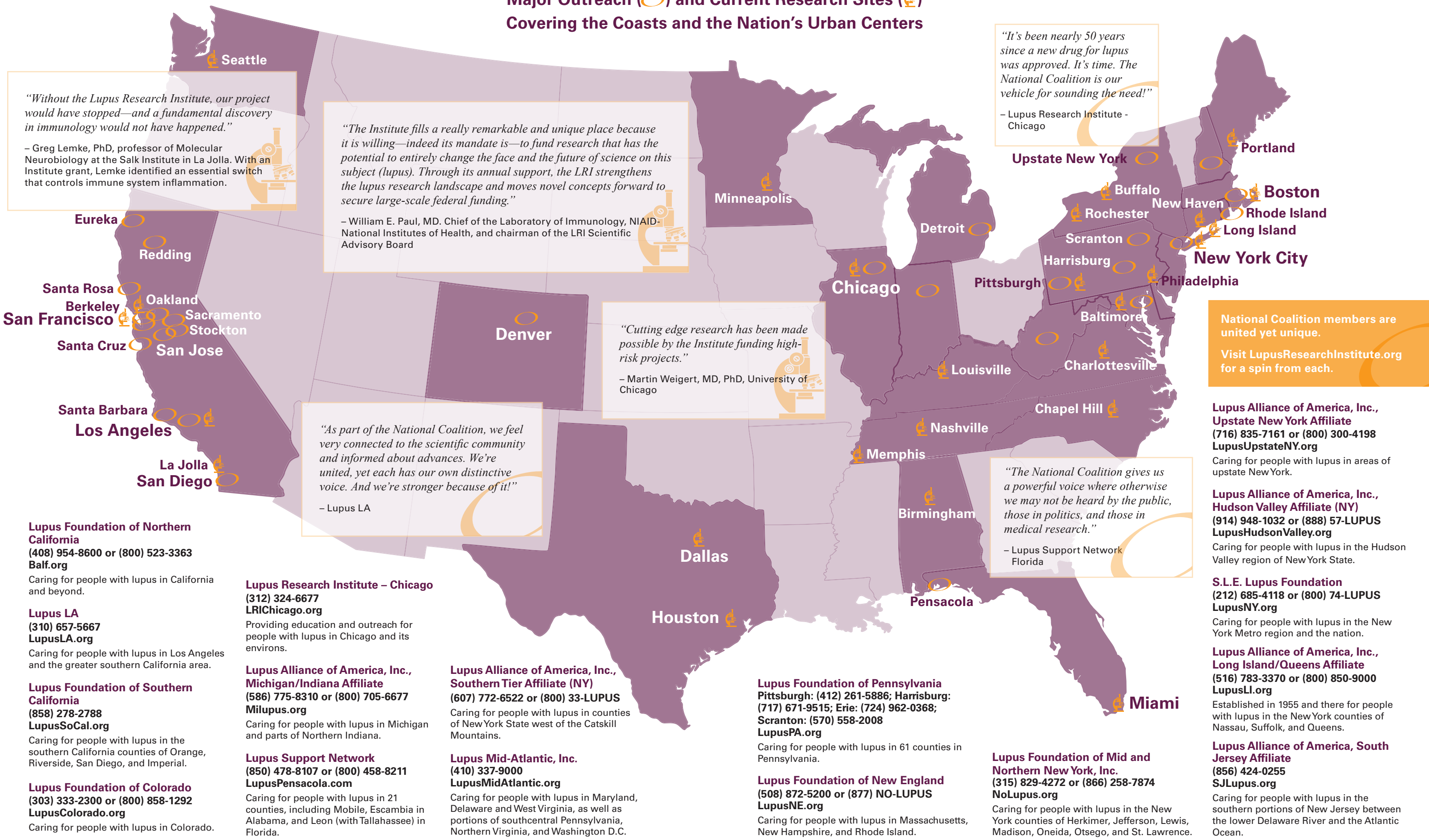
To combat these disparities, the Coalition briefs Congress, collaborates with national organizations, and educates underserved communities.

Lupus advocate Candace Baptiste [R] with Frances Ashe-Goins, RN, MPH, deputy director of the Office on Women's Health. *Right:* Attendees at the Coalition's Congressional Briefing on Racial Disparities in Lupus hear about racial disparities in prevalence, complications, and access to care. Briefing sponsored by Rep. Hilda L. Solis (D-CA), chair of the Congressional Hispanic Caucus Task Force on Health.

National Coalition of the Lupus Research Institute

Major Outreach (○) and Current Research Sites (🔬)

Covering the Coasts and the Nation's Urban Centers



"Without the Lupus Research Institute, our project would have stopped—and a fundamental discovery in immunology would not have happened."

– Greg Lemke, PhD, professor of Molecular Neurobiology at the Salk Institute in La Jolla. With an Institute grant, Lemke identified an essential switch that controls immune system inflammation.

"The Institute fills a really remarkable and unique place because it is willing—indeed its mandate is—to fund research that has the potential to entirely change the face and the future of science on this subject (lupus). Through its annual support, the LRI strengthens the lupus research landscape and moves novel concepts forward to secure large-scale federal funding."

– William E. Paul, MD. Chief of the Laboratory of Immunology, NIAID-National Institutes of Health, and chairman of the LRI Scientific Advisory Board

"Cutting edge research has been made possible by the Institute funding high-risk projects."

– Martin Weigert, MD, PhD, University of Chicago

"It's been nearly 50 years since a new drug for lupus was approved. It's time. The National Coalition is our vehicle for sounding the need!"

– Lupus Research Institute - Chicago

"The National Coalition gives us a powerful voice where otherwise we may not be heard by the public, those in politics, and those in medical research."

– Lupus Support Network Florida

"As part of the National Coalition, we feel very connected to the scientific community and informed about advances. We're united, yet each has our own distinctive voice. And we're stronger because of it!"

– Lupus LA

National Coalition members are united yet unique.

Visit LupusResearchInstitute.org for a spin from each.

Lupus Foundation of Northern California
 (408) 954-8600 or (800) 523-3363
 Balf.org
 Caring for people with lupus in California and beyond.

Lupus LA
 (310) 657-5667
 LupusLA.org
 Caring for people with lupus in Los Angeles and the greater southern California area.

Lupus Foundation of Southern California
 (858) 278-2788
 LupusSoCal.org
 Caring for people with lupus in the southern California counties of Orange, Riverside, San Diego, and Imperial.

Lupus Foundation of Colorado
 (303) 333-2300 or (800) 858-1292
 LupusColorado.org
 Caring for people with lupus in Colorado.

Lupus Research Institute – Chicago
 (312) 324-6677
 LRChicago.org
 Providing education and outreach for people with lupus in Chicago and its environs.

Lupus Alliance of America, Inc., Michigan/Indiana Affiliate
 (586) 775-8310 or (800) 705-6677
 Milupus.org
 Caring for people with lupus in Michigan and parts of Northern Indiana.

Lupus Support Network
 (850) 478-8107 or (800) 458-8211
 LupusPensacola.com
 Caring for people with lupus in 21 counties, including Mobile, Escambia in Alabama, and Leon (with Tallahassee) in Florida.

Lupus Alliance of America, Inc., Southern Tier Affiliate (NY)
 (607) 772-6522 or (800) 33-LUPUS
 Caring for people with lupus in counties of New York State west of the Catskill Mountains.

Lupus Mid-Atlantic, Inc.
 (410) 337-9000
 LupusMidAtlantic.org
 Caring for people with lupus in Maryland, Delaware and West Virginia, as well as portions of southcentral Pennsylvania, Northern Virginia, and Washington D.C.

Lupus Foundation of Pennsylvania
 Pittsburgh: (412) 261-5886; Harrisburg: (717) 671-9515; Erie: (724) 962-0368;
 Scranton: (570) 558-2008
 LupusPA.org
 Caring for people with lupus in 61 counties in Pennsylvania.

Lupus Foundation of New England
 (508) 872-5200 or (877) NO-LUPUS
 LupusNE.org
 Caring for people with lupus in Massachusetts, New Hampshire, and Rhode Island.

Lupus Alliance of America, Inc., Upstate New York Affiliate
 (716) 835-7161 or (800) 300-4198
 LupusUpstateNY.org
 Caring for people with lupus in areas of upstate New York.

Lupus Alliance of America, Inc., Hudson Valley Affiliate (NY)
 (914) 948-1032 or (888) 57-LUPUS
 LupusHudsonValley.org
 Caring for people with lupus in the Hudson Valley region of New York State.

S.L.E. Lupus Foundation
 (212) 685-4118 or (800) 74-LUPUS
 LupusNY.org
 Caring for people with lupus in the New York Metro region and the nation.

Lupus Alliance of America, Inc., Long Island/Queens Affiliate
 (516) 783-3370 or (800) 850-9000
 LupusLI.org
 Established in 1955 and there for people with lupus in the New York counties of Nassau, Suffolk, and Queens.

Lupus Alliance of America, South Jersey Affiliate
 (856) 424-0255
 SJLupus.org
 Caring for people with lupus in the southern portions of New Jersey between the lower Delaware River and the Atlantic Ocean.